


## Delivering an assessment with SMART Response assessment software

This *Quick Reference* provides the information that you need to deliver an assessment using SMART Notebook software and SMART Response assessment software. Before you begin, make sure that you install SMART Notebook and SMART Response assessment software on your computer.

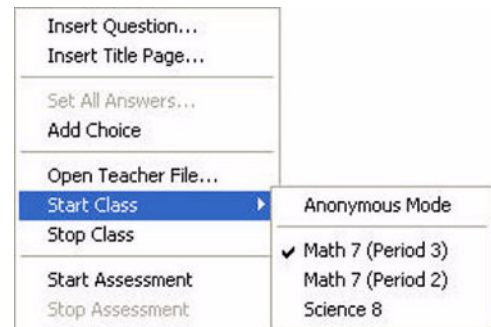
### Starting your class

Before you start your assessment in SMART Notebook software, you need to start your class in SMART Response software to allow the clickers to receive and respond to questions.

#### To start your class

- 1 Click the **SMART Response Assessment Software** icon  in the notification area
- 2 Click **Ask Questions**. SMART Notebook opens.
- 3 Open the .notebook file that contains the assessment you want to deliver
- 4 Select **Response > Start Class** in the main menu bar
- 5 Select the class that you want to deliver the assessment to

**NOTE:** You can select *Anonymous* if you don't want SMART Response to record the results in the Teacher Tools Gradebook



- 6 The *Class Started* notification window appears

Students can now answer questions using the clickers, and Teacher Tools software stores the results.

### Turning on the clickers

Once you have started the class, your students can turn on and log-in to the clickers.

#### To turn on the clickers

- 1 Press and hold the **Power** button on the clicker for about one second. A welcome message appears.
  - 2 Press the **Up** and **Down** buttons to scroll through the list of classes in range
- NOTE:** If your class is not listed, select **Find a class** to refresh the list of classes within range.
- 3 Select the class that you want to join, and then press **Enter**
  - 4 Type the Student ID using the numeric keys on the clicker
  - 5 Press the **Y** (Yes) or **N** (No) button on the clicker to confirm the correct Student ID

**NOTE:** If the students respond **N** (No), they have to re-enter a Student ID number.

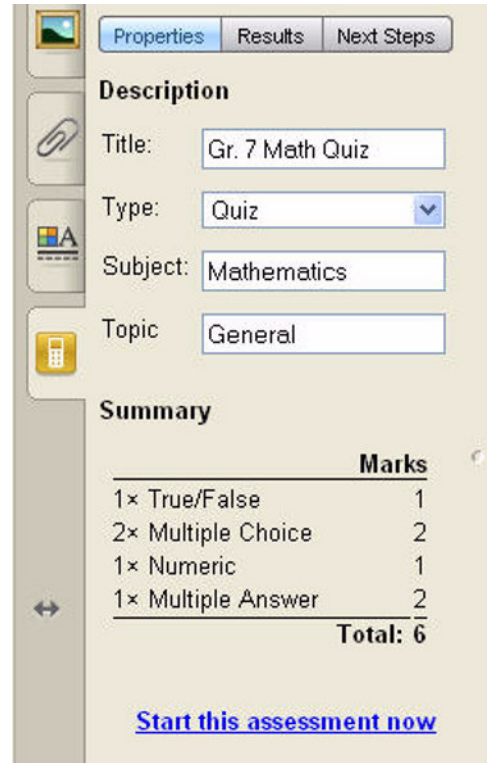


## Starting your assessment in SMART Notebook

Start the assessment when you're ready for your students to enter responses to questions.

### To start the assessment

- 1 Navigate to the first page of the assessment. This is the title page.
- 2 Press the **SMART Response** tab
- 3 Press **Properties** in the SMART Response tab
- 4 Ensure that the information in the Description fields is accurate. If it isn't, make the required edits.
- 5 Select the appropriate student feedback option from the **Show grades to students** drop-down menu
- 6 Press **Start this assessment now**



The screenshot shows the 'Properties' tab of the SMART Notebook software. It features a sidebar with icons for a landscape, a paperclip, a SMART logo, and a calculator. The main area has three tabs: 'Properties', 'Results', and 'Next Steps'. Under the 'Description' section, there are input fields for 'Title' (Gr. 7 Math Quiz), 'Type' (Quiz), 'Subject' (Mathematics), and 'Topic' (General). Below this is a 'Summary' section with a table of question types and marks.

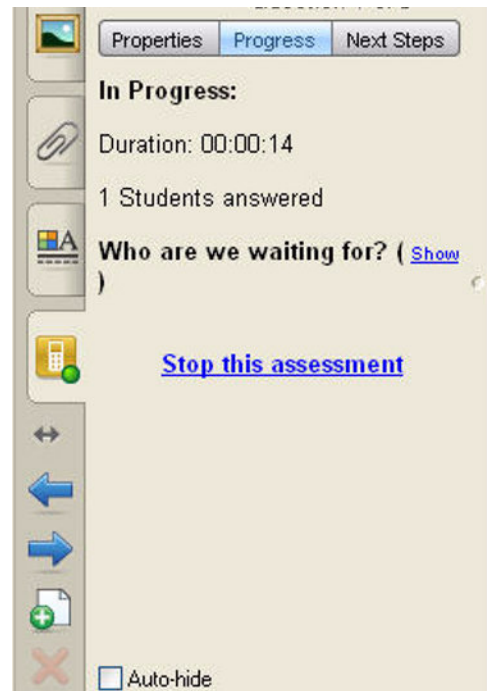
	Marks
1× True/False	1
2× Multiple Choice	2
1× Numeric	1
1× Multiple Answer	2
<b>Total:</b>	<b>6</b>

At the bottom, there is a blue button labeled 'Start this assessment now'.

## Delivering your assessment

After you start the assessment in SMART Notebook software, students can start responding to questions using their clickers.

- 1 Press the **Next Page** button on the SMART Notebook toolbar to navigate to the first question of your assessment
- 2 Have students select the correct response to the question on their clickers, and then press **Enter**
- 3 Press **Progress** in the SMART Response tab to monitor how many students have answered the question
- 4 Press the **Next Page** button when all students have answered the question to advance to the next page
- 5 Press **Stop this assessment** when the final question has been answered



The screenshot shows the 'Progress' tab of the SMART Notebook software. It features a sidebar with icons for a landscape, a paperclip, a SMART logo, a calculator, and navigation arrows. The main area has three tabs: 'Properties', 'Progress', and 'Next Steps'. Under the 'In Progress:' section, it displays 'Duration: 00:00:14' and '1 Students answered'. Below this is a section titled 'Who are we waiting for?' with a '( Show )' link. At the bottom, there is a blue button labeled 'Stop this assessment' and an 'Auto-hide' checkbox.

**TIP:** Open the SMART Response tab and use the options provided at any point during your assessment. To keep these options open during the assessment, ensure that you clear the **Auto-hide** checkbox.